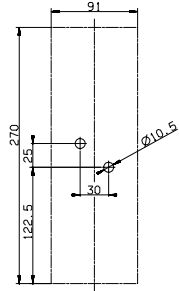
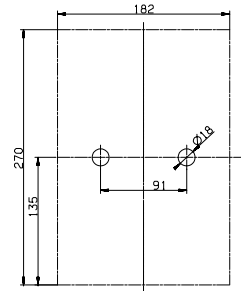


Befestigungsmaße
Fixing dimensions

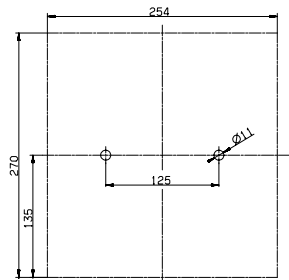
1-polig
LTL3-1/9
1-pole
LTL3-1/9



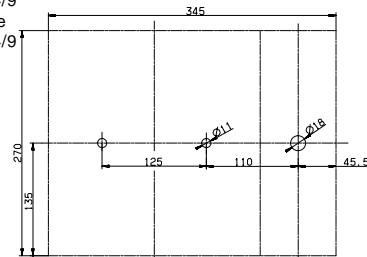
2-polig
LTL3-2/9
2-pole
LTL3-2/9



3-polig
LTL3-3/9
3-pole
LTL3-3/9



4-polig
LTL3-4/9
4-pole
LTL3-4/9



Anschlüsse für NH-Sicherungslasttrennschalter Gr.3
Terminal connections of LV HRC fuse switch disconnectors size 3

Anschlußart Connection types	Typ Type	Anzugsdrehmoment Rated torque	Klemmbereich Kabel Clamping range	Schienen - bzw. FLachbandabmessungen Size flat strip
Flachanschluß M10 Screw terminal M10	F-LTL3-M10	30 - 35 Nm	Kabelschuhe nach DIN 46234 nach DIN 46235 cable lugs acc. to DIN 46234 acc. to DIN 46235	40 x 10 mm
Schellenklemmen- anschluß Clip terminal	S3	23 Nm	-	Stromschiene max. 21 x 16 Flexibles Flachband max. 11 x 21 x 1 Busbars max. 21 x 16 flexible flat strip max. 11 x 21 x 1
Prismenklemmen- anschluß Prism clamp	P3	11 Nm	120 - 300 mm² Al/Cu	-
Doppelprismen- klemmenanschluß Double prism clamp	P32	11 Nm	2x 120 - 240 mm² Al/Cu P32 in Kombination mit "K" nicht möglich 2x 120 - 240 mm² Al/Cu P32 not possible in combination with "K"	-

Gebrauchsanleitung
Installation Instructions

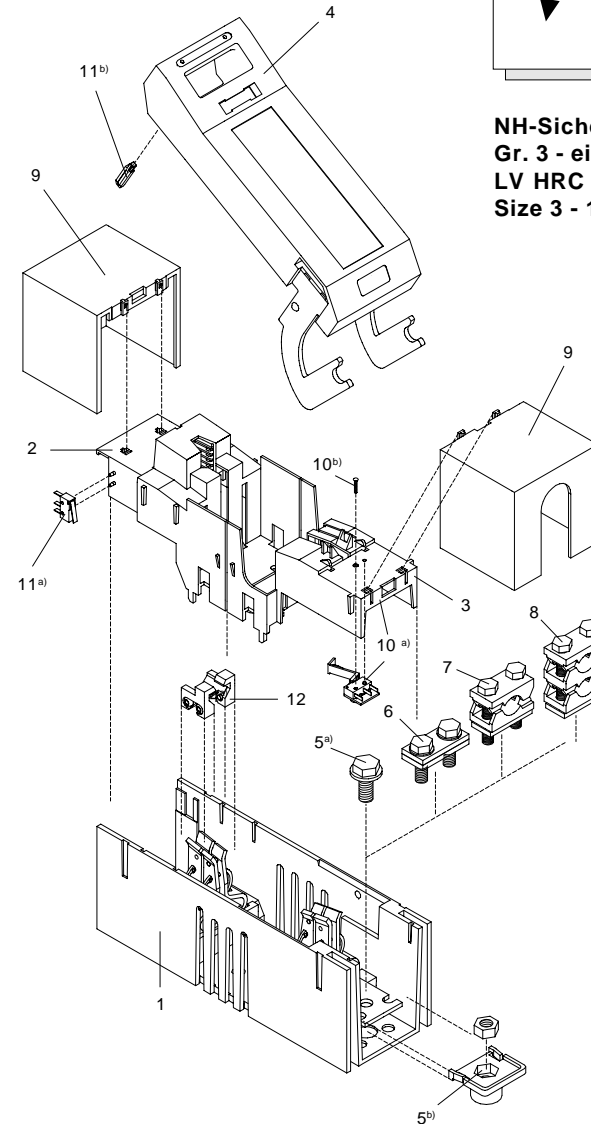
GA-T009

13913b



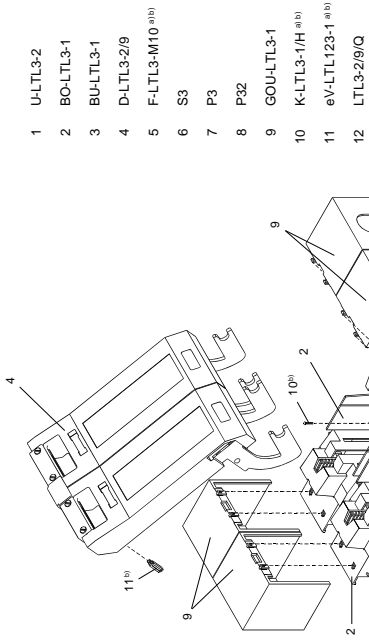
Vor Beginn der Arbeiten Gerät spannungsfrei schalten. Inbetriebsetzung und Wartung nur durch Fachpersonal. To prevent electrical shock disconnect from power source before installing or servicing. Work and maintenance by skilled staff only.

NH-Sicherungslasttrennschalter
Gr. 3 - einpolig
LV HRC fuse switch disconnecter
Size 3 - 1-pole



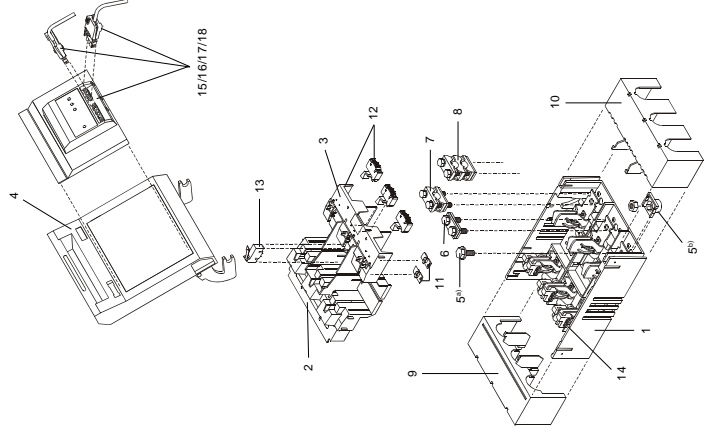
- 1 U-LTL3-1
- 2 BO-LTL3-1
- 3 BU-LTL3-1
- 4 D-LTL3-1/9
- 5 F-LTL3-M10^{a) b)}
- 6 S3
- 7 P3
- 8 P32
- 9 GOU-LTL3-1
- 10 K-LTL3-1/H^{a) b)}
- 11 eV-LTL123-1^{a) b)}
- 12 LTL3-1/9/Q

NH-Sicherungs-Lasttrennschalter
Gr. 3 - zweipolig
LV HRC fuse switch disconnecter
Size 3 - 2-pole



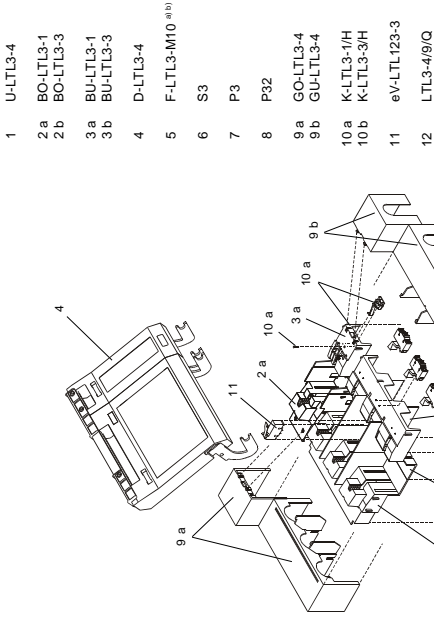
- 1 U-LTL3-2
- 2 BO-LTL3-1
- 3 BU-LTL3-1
- 4 D-LTL3-2/9
- 5 F-LTL3-M10 ^{a) b)}
- 6 S3
- 7 P3
- 8 P32
- 9 GO-U-LTL3-1
- 10 K-LTL3-1/H ^{a) b)}
- 11 eV-LTL123-1 ^{a) b)}
- 12 LTL3-2/9/Q

NH-Sicherungs-Lasttrennschalter
Gr. 3 - dreipolig
LV HRC fuse switch disconnecter
Size 3 - 3-pole



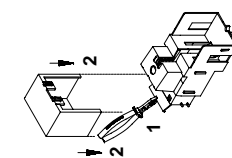
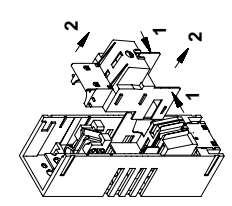
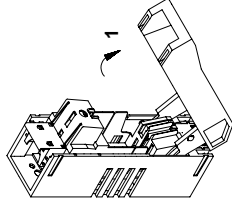
- 1 U-LTL3-3
- 2 BO-LTL3-3
- 3 BU-LTL3-3
- 4 D-LTL3-3/9
- 5 F-LTL3-M10 ^{a) b)}
- 6 S3
- 7 P3
- 8 P32
- 9 GO-U-LTL3-3
- 10 GU-LTL3-3
- 11 VH-G-LTL00123-3
- 12 K-LTL3-3/H
- 13 eV-LTL123-3
- 14 LTL3-3/9/Q
- 15 D-LTL3-3/9/
- 16 EMDS62TR1
- 17 D-LTL3-3/9/
- 18 EMDS42TA1

NH-Sicherungs-Lasttrennschalter
Gr. 3 - vierpolig
LV HRC fuse switch disconnecter
Size 3 - 4-pole



- 1 U-LTL3-4
- 2 a BO-LTL3-1
- 2 b BO-LTL3-3
- 3 a BU-LTL3-1
- 3 b BU-LTL3-3
- 4 D-LTL3-4
- 5 F-LTL3-M10 ^{a) b)}
- 6 S3
- 7 P3
- 8 P32
- 9 a GO-LTL3-4
- 9 b GU-LTL3-4
- 10 a K-LTL3-1/H
- 10 b K-LTL3-3/H
- 11 eV-LTL123-3
- 12 LTL3-4/9/Q

Gr. 3 - einpolig
Size 3 - 1-pole



Gr. 3 - dreipolig
Size 3 - 3-pole

