

IEC Low Voltage General Purpose Protection

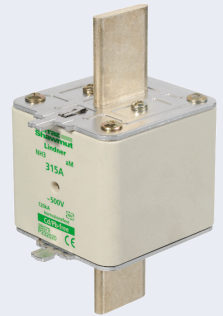
NH fuse-links Plain blades

Sizes 000 to 4a aM 500VAC from 2 to 1250A

The NH system is classified among plug-in fuse systems and is composed of:

- fuse-base, (possibly including terminal covers and phase barriers)
- fuse-link with blade contact
- fuse-link replacement device (LV HRC fuse puller)

Since the design of this system cannot guarantee non-interchangeability of rated current, it must be handled by a qualified professional.



Benefits

Dimensions according to DIN 43 620
Parts 1 to 4 standard

Non-isolated gripping lugs

Double indicator

Lead free contact blades

0% cadmium

Applications

aM: Partial purpose, motor circuit protection

Ratings

Breaking Capacity @ 500V: 80kA

Approvals

DIN 57636 Part 201

VDE 0636 Part 201

IEC 60269-1 and -2



Related products

Fuse-holders: NH fuse bases

NH fuse switch disconnectors



Beige: melted



Red: non melted

IEC Low Voltage General Purpose Protection

NH fuse-links Plain blades

Sizes 000 to 4a aM 500VAC from 2 to 1250A



Sizes 000 to 3

Size	Rated Voltage (V)	Nominal Current (A)	Watts Loss @ 100% In (W)	Previous reference	Catalog Number	Reference Number	Weight (g)	Pack.
000	500	2	0.1	2B613.	NH000AM50V2	K232493	130	2
000	500	4	0.2	2B619.	NH000AM50V4	L232494	130	2
000	500	6	0.3	2B623.	NH000AM50V6	M232495	130	2
000	500	10	0.5	2B631.	NH000AM50V10	N232496	130	2
000	500	16	0.7	2B635.	NH000AM50V16	P232497	130	2
000	500	20	0.9	2B637.	NH000AM50V20	Q232498	130	2
000	500	25	1.2	2B639.	NH000AM50V25	R232499	130	2
000	500	32	1.5	2B643.	NH000AM50V32	S232500	130	2
000	500	35	1.6	2B645.	NH000AM50V35	T232501	130	2
000	500	40	1.8	2B647.	NH000AM50V40	V232502	130	2
000	500	50	2.3	2B651.	NH000AM50V50	W232503	130	2
000	500	63	2.9	2B655.	NH000AM50V63	X232504	130	2
000	500	80	3.6	2B659.	NH000AM50V80	C227863	130	2
00	500	100	5.8	2B763.	NH00AM50V100	Y232505	200	2
00	500	125	6.4	2B765.	NH00AM50V125	Z232506	200	2
00	500	160	7.9	2B769.	NH00AM50V160	J227869	200	2
0	500	100	6.0	2B063.	NH0AM50V100	A232507	260	2
0	500	125	7.9	2B065.	NH0AM50V125	B232508	260	2
0	500	160	10.5	2B069.	NH0AM50V160	C232509	260	2
0	500	200	11.8	2B071.	NH0AM50V200	A227884	260	2
1	500	100	5.8	2B163.	NH1AM50V100	D232510	420	2
1	500	125	7.5	2B165.	NH1AM50V125	E232511	420	2
1	500	160	10.4	2B169.	NH1AM50V160	F232512	420	2
1	500	200	14.2	2B171.	NH1AM50V200	G232513	420	2
1	500	224	15.8	2B173.	NH1AM50V224	H232514	420	2
1	500	250	17.5	2B175.	NH1AM50V250	J232515	420	2
1	500	315	22.1	2B179.	NH1AM50V315	K227962	420	2
2	500	250	16.8	2B275.	NH2AM50V250	K232516	640	2
2	500	315	23.1	2B279.	NH2AM50V315	L232517	640	2
2	500	355	26.4	2B281.	NH2AM50V355	M232518	640	2
2	500	400	29.7	2B283.	NH2AM50V400	N232519	640	2
2	500	500	34.4	2B287.	NH2AM50V500	C227978	640	2
3	500	315	21	2B379.	NH3AM50V315	P232520	1050	1
3	500	355	23.3	2B381.	NH3AM50V355	Q232521	1050	1
3	500	400	29.1	2B383.	NH3AM50V400	R232522	1050	1
3	500	425	29.1	2B385.	NH3AM50V425	S232523	1050	1
3	500	450	34	2B386.	NH3AM50V450	T232524	1050	1
3	500	500	42	2B387.	NH3AM50V500	V232525	1050	1
3	500	630	42	2B389.	NH3AM50V630	M227987	1050	1

Size 4 - With screw contact

Size	Rated Voltage (V)	Nominal Current (A)	Watts Loss @ 100% In (W)	Previous reference	Catalog Number	Reference Number	Weight (g)	Pack.
4	500	400*	26	8004.400505	NH4AM50V400-8	P233555	2180	1
4	500	500*	38	8004.500505	NH4AM50V500-8	Q233556	2180	1
4	500	630*	50	8004.630505	NH4AM50V630-8	E222115	2180	1
4	500	800*	65	8004.800505	NH4AM50V800-8	V222865	2180	1
4	500	1000*	80	8004.100505	NH4AM50V1000-8	S219137	2180	1
4	500	1250*	110	8004.125505	NH4AM50V1250-8	V219668	2180	1

Size 4a - With contact blades for NH-bottom size 4a with swivel unit

Size	Rated Voltage (V)	Nominal Current (A)	Watts Loss @ 100% In (W)	Previous reference	Catalog Number	Reference Number	Weight (g)	Pack.
4a	500	500*	38	8014.500505	NH4AAM50V500-8	R233557	2000	1
4a	500	630*	50	8014.630505	NH4AAM50V630-8	S233558	2000	1
4a	500	800*	65	8014.800505	NH4AAM50V800-8	T233559	2000	1
4a	500	1000*	80	8014.100505	NH4AAM50V1000-8	V233560	2000	1
4a	500	1250*	110	8014.125505	NH4AAM50V1250-8	W233561	2000	1

*With trip indicator on top

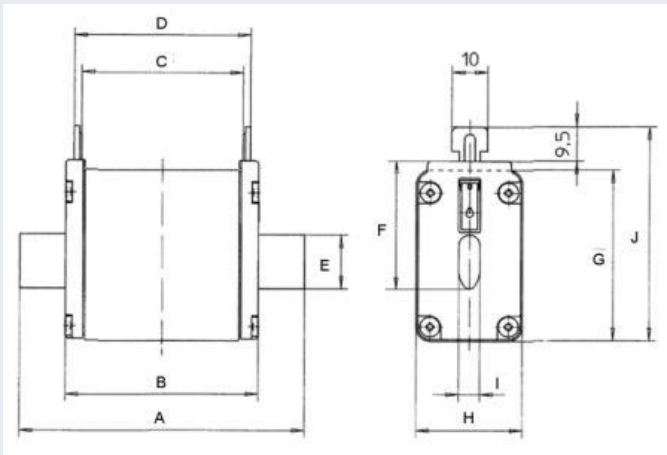
IEC Low Voltage General Purpose Protection

NH fuse-links Plain blades

Sizes 000 to 4a aM 500VAC from 2 to 1250A



Dimensions (mm)



Size	A	B	C	D	E	F	G	H	I	J
000	79	53.8	45	49	15	35.8	40.5	21	6	47.8
00	79	53.8	45	49	15	35.8	40.5	30	6	47.8
0	125	68	64	68	15	35.8	44	30	6	47.8
1	135	75	64	68	20	40	47	39	6	52
2	150	75	64	68	26	48	47	39	6	60
3	150	75	64	68	33	60	58	72	6	72
4	200	85	62	68	49	86	108	90	8	117.5

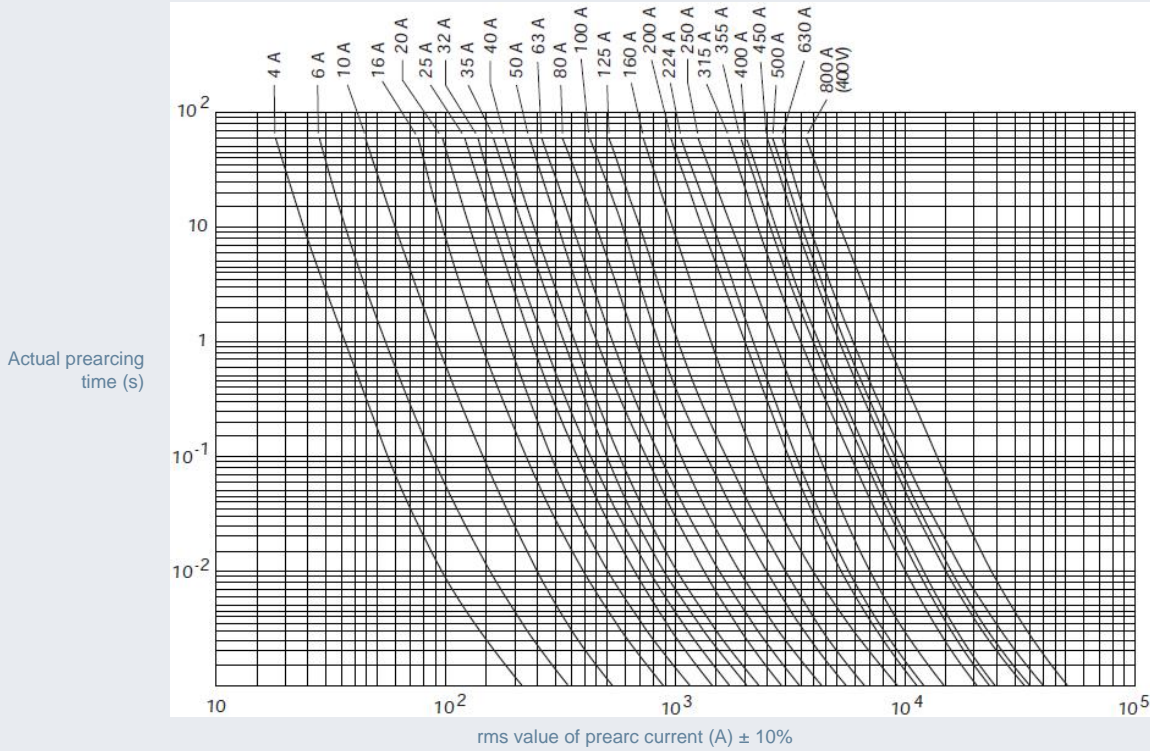
IEC Low Voltage General Purpose Protection

NH fuse-links Plain blades

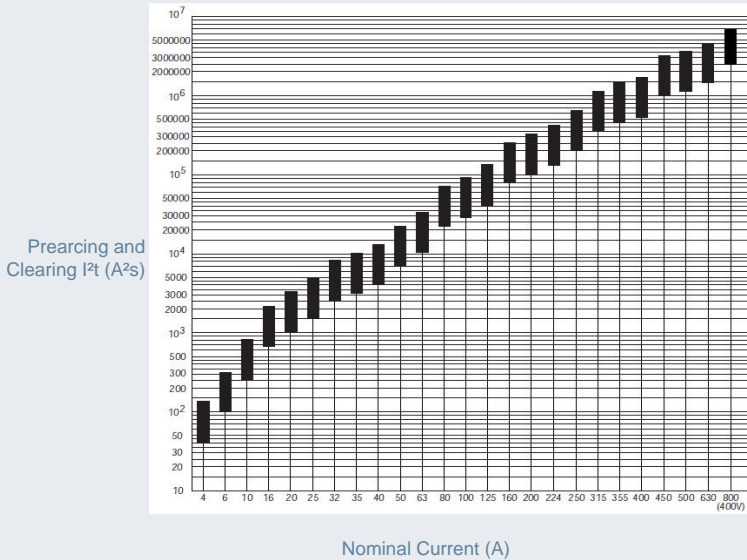
Sizes 000 to 4a aM 500VAC from 2 to 1250A



Time current characteristics



Characteristics I²t



Peak let thru characteristics

