

# IEC Low Voltage General Purpose Protection

## NH fuse-links Plain blades

### Sizes 000 to 4a gG 690VAC from 2 to 800A

The NH system is classified among plug-in fuse systems and is composed of:

- fuse-base, (possibly including terminal covers and phase barriers)
- fuse-link with blade contact
- fuse-link replacement device (LV HRC fuse puller)

Since the design of this system cannot guarantee non-interchangeability of rated current, it must be handled by a qualified professional.

#### Benefits

Dimensions according to DIN 43 620  
Parts 1 to 4 standard

Non-isolated gripping lugs

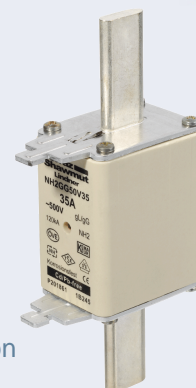
Double indicator

Lead free contact blades

0% cadmium

#### Applications

gG: general purpose cable and line protection

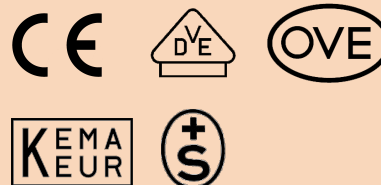


#### Approvals

DIN 57636 Part 201

VDE 0636 Part 201

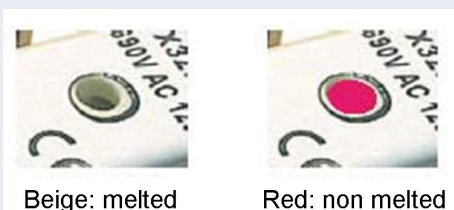
IEC 60269-1 and -2



#### Related products

Fuse-holders: NH fuse bases

NH fuse switch disconnectors



# IEC Low Voltage General Purpose Protection

## NH fuse-links Plain blades

### Sizes 000 to 4a gG 690VAC from 2 to 800A



#### Sizes 000 to 1

Size	Rated Voltage (V)	Nominal Current (A)	Watts Loss @ 100% In (W)	Previous reference	Catalog Number	Reference Number	Weight (g)	Pack.
000	690	2	1.9	1C613.	NH000GG69V2	E228440	130	3
000	690	4	1.5	1C619.	NH000GG69V4	F228441	130	3
000	690	6	1.6	1C623.	NH000GG69V6	G228442	130	3
000	690	10	1.1	1C631.	NH000GG69V10	J228444	130	3
000	690	16	1.8	1C635.	NH000GG69V16	K228445	130	3
000	690	20	2.3	1C637.	NH000GG69V20	L228446	130	3
000	690	25	2.4	1C639.	NH000GG69V25	M228447	130	3
000	690	32	3.1	1C643.	NH000GG69V32	N228448	130	3
000	690	35	3.0	1C645.	NH000GG69V35	P228449	130	3
000	690	40	3.7	1C647.	NH000GG69V40	Q228450	130	3
000	690	50	4.1	1C651.	NH000GG69V50	R228451	130	3
000	690	63	5.4	1C655.	NH000GG69V63	S228452	130	3
000	690	80	6.5	1C659.	NH000GG69V80	T228453	130	3
00	690	32	3.1	1C743.	NH00GG69V32	V228454	200	3
00	690	35	3.0	1C745.	NH00GG69V35	W228455	200	3
00	690	40	3.7	1C747.	NH00GG69V40	X228456	200	3
00	690	50	4.1	1C751.	NH00GG69V50	Y228457	200	3
00	690	63	5.6	1C755.	NH00GG69V63	Z228458	200	3
00	690	80	6.8	1C759.	NH00GG69V80	A228459	200	3
00	690	100	7.5	1C763.	NH00GG69V100	B228460	200	3
00	690	125	10.0	1C765.	NH00GG69V125	C228461	200	3
0	690	6	1.6	1C023.	NH0GG69V6	D228462	270	3
0	690	10	1.1	1C031.	NH0GG69V10	E228463	270	3
0	690	16	1.8	1C035.	NH0GG69V16	F228464	270	3
0	690	20	2.3	1C037.	NH0GG69V20	G228465	270	3
0	690	25	2.4	1C039.	NH0GG69V25	H228466	270	3
0	690	32	3.1	1C043.	NH0GG69V32	J228467	270	3
0	690	35	3.0	1C045.	NH0GG69V35	K228468	270	3
0	690	40	3.7	1C047.	NH0GG69V40	L228469	270	3
0	690	50	4.1	1C051.	NH0GG69V50	M228470	270	3
0	690	63	6.6	1C055.	NH0GG69V63	N228471	270	3
0	690	80	8.0	1C059.	NH0GG69V80	P228472	270	3
0	690	100	9.4	1C063.	NH0GG69V100	Q228473	270	3
0	690	125	11.8	1C065.	NH0GG69V125	R228474	270	3
0	690	160	14.6	1C069.	NH0GG69V160	S228475	270	3
1	690	16	1.8	1C135.	NH1GG69V16	T228476	260	3
1	690	20	2.3	1C137.	NH1GG69V20	V228477	260	3
1	690	25	2.4	1C139.	NH1GG69V25	W228478	260	3
1	690	32	3.1	1C143.	NH1GG69V32	X228479	260	3
1	690	35	3.0	1C145.	NH1GG69V35	Y228480	260	3
1	690	40	3.7	1C147.	NH1GG69V40	Z228481	260	3
1	690	50	4.1	1C151.	NH1GG69V50	A228482	260	3
1	690	63	6.6	1C155.	NH1GG69V63	B228483	260	3
1	690	80	8.0	1C159.	NH1GG69V80	C228484	260	3
1	690	100	9.4	1C163.	NH1GG69V100	D228485	260	3
1	690	125	11.8	1C165.	NH1GG69V125	E228486	420	3
1	690	160	14.6	1C169.	NH1GG69V160	F228487	420	3
1	690	200	18.0	1C171.	NH1GG69V200	G228488	420	3
1	690	224	19.0	1C173.	NH1GG69V224	V233261	420	3
1	690	250	20.0	1C175.	NH1GG69V250	W233262	420	3

# IEC Low Voltage General Purpose Protection

## NH fuse-links Plain blades

### Sizes 000 to 4a gG 690VAC from 2 to 800A



#### Sizes 2 to 3

Size	Rated Voltage (V)	Nominal Current (A)	Watts Loss @ 100% In (W)	Previous reference	Catalog Number	Reference Number	Weight (g)	Pack.
2	690	32	3.1	1C243.	NH2GG69V32	H228489	420	3
2	690	35	3.0	1C245.	NH2GG69V35	J228490	420	3
2	690	40	3.7	1C247.	NH2GG69V40	K228491	420	3
2	690	50	4.1	1C251.	NH2GG69V50	L228492	420	3
2	690	63	6.8	1C255.	NH2GG69V63	M228493	420	3
2	690	80	8.3	1C259.	NH2GG69V80	N228494	420	3
2	690	100	10.7	1C263.	NH2GG69V100	P228495	420	3
2	690	125	12.2	1C265.	NH2GG69V125	Q228496	420	3
2	690	160	15.0	1C269.	NH2GG69V160	R228497	420	3
2	690	200	18.5	1C271.	NH2GG69V200	S228498	420	3
2	690	224	19.2	1C273.	NH2GG69V224	T228499	420	3
2	690	250	20.6	1C275.	NH2GG69V250	V228500	420	3
2	690	300	21.0	1C277.	NH2GG69V300	W228501	640	3
2	690	315	25.0	1C279.	NH2GG69V315	X228502	650	3
2	690	355	31.5	1C281.	NH2GG69V355	Y228503	650	3
3	690	250	21.1	1C375.	NH3GG69V250	Z228504	650	1
3	690	300	22.6	1C377.	NH3GG69V300	A228505	650	1
3	690	315	25.0	1C379.	NH3GG69V315	B228506	650	1
3	690	355	32.0	1C381.	NH3GG69V355	C228507	650	1
3	690	400	34.0	1C383.	NH3GG69V400	D228508	1050	1
3	690	425	34.0	1C385.	NH3GG69V425	E228509	1050	1
3	690	500	43.0	1C387.	NH3GG69V500	F228510	1050	1

#### Sizes 4 - With screw contact

Size	Rated Voltage (V)	Nominal Current (A)	Watts Loss @ 100% In (W)	Previous reference	Catalog Number	Reference Number	Weight (g)	Pack.
4	690	400*	31	8004.400765	NH4GG69V400-8	N214004	2000	1
4	690	500*	35	8004.500765	NH4GG69V500-8	Y215025	2000	1
4	690	630*	46.6	8004.630765	NH4GG69V630-8	E215537	2000	1
4	690	800*	70	8004.800765	NH4GG69V800-8	K216554	2000	1

#### Sizes 4a - Contact blades for NH-bottom size 4a with swivel unit

Size	Rated Voltage (V)	Nominal Current (A)	Watts Loss @ 100% In (W)	Previous reference	Catalog Number	Reference Number	Weight (g)	Pack.
4a	690	400*	31	8014.400765	NH4AGG69V400-8	W217070	1950	1
4a	690	500*	35	8014.500765	NH4AGG69V500-8	H217587	1950	1
4a	690	630*	46.6	8014.630765	NH4AGG69V630-8	W222107	1950	1
4a	690	800*	70	8014.800765	NH4AGG69V800-8	M222858	1950	1

\* With indicator on top

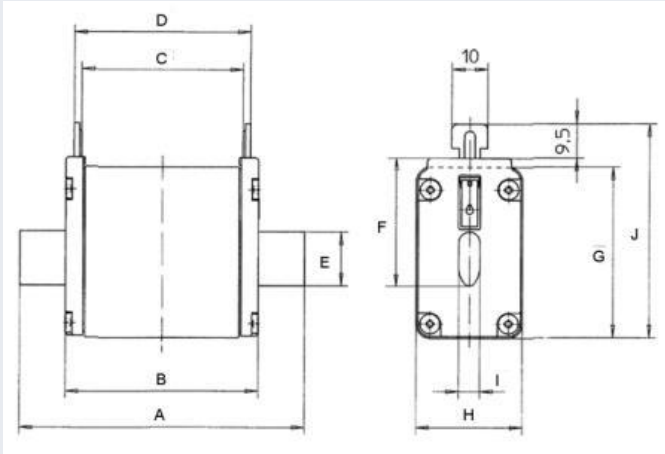
# IEC Low Voltage General Purpose Protection

## NH fuse-links Plain blades

Sizes 000 to 4a gG 690VAC from 2 to 800A



### Dimensions (mm)



Size	Nominal Current (A)	A	B	C	D	E	F	G	H	I	J
000	2-35	79	53.8	45	49	15	35.8	40	20	6	47.8
00	40-100	79	53.8	45	49	15	35.8	48	30	6	47.8
1	16-160	135	75	64	68	20	40	44	30	6	52
1	200-250	135	75	64	68	20	40	47	39	6	52
2	35-100	150	75	64	68	26	48	44	30	6	60
2	125-315	150	75	64	68	26	60	47	39	6	72
3	250-300	150	75	64	68	26	60	47	39	6	72
3	315-425	150	75	64	68	33	60	58	51	6	72
3	500	150	75	64	68	33	70	64	64	6	72
4	400-800	200	85	62	68	49	86	108	90	8	117.5
4a	400-800	85	85	84	90	49	86	108	90	6	117.5

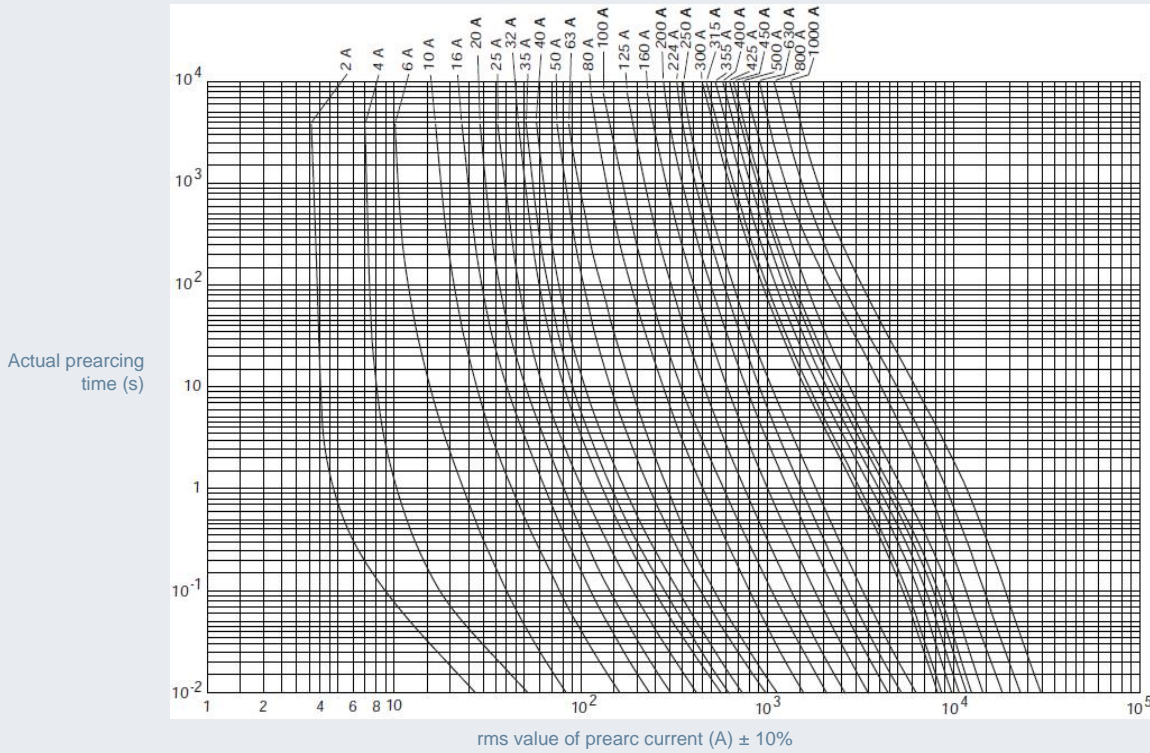
# IEC Low Voltage General Purpose Protection

## NH fuse-links Plain blades

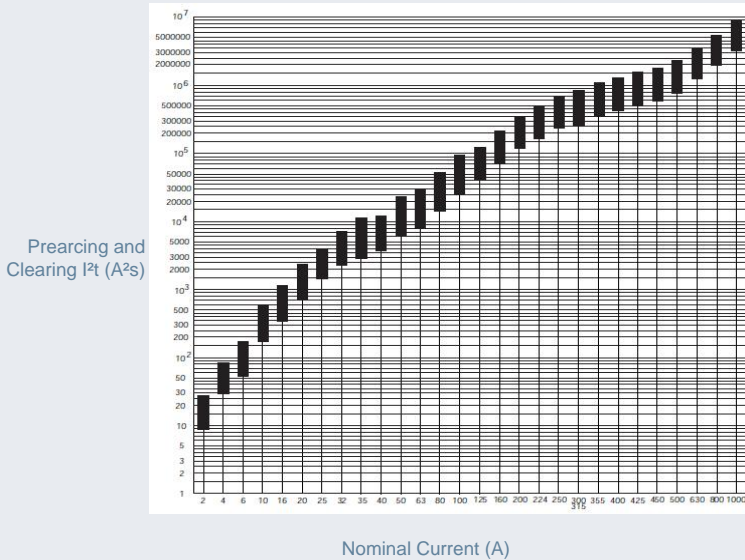
Sizes 000 to 4a gG 690VAC from 2 to 800A



Time current characteristics



Characteristics I<sup>2</sup>t



Peak let thru characteristics

